

Prismxel

Technical Specification

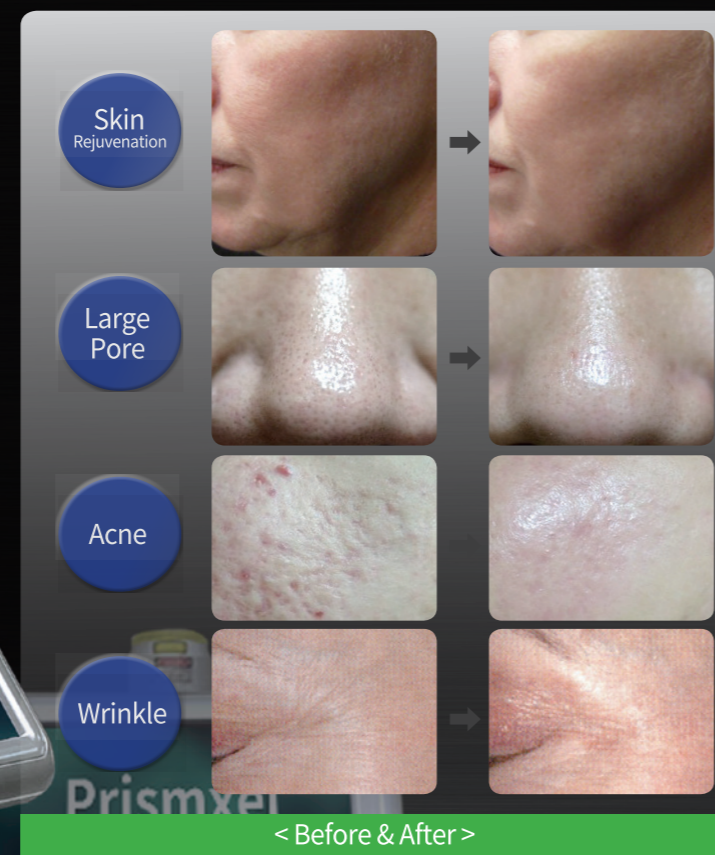
Model	Prismxel	
Laser Type	CO2 Laser	
Wave length	10.600nm	
Laser power	1- 40W	
Guide Beam	650nm Less than 5mW	
Function		
AimingBeam	Diode Laser 655nm (5mw) :1 - 10 Step	
Surgical Mode	HandpieceType	50mm,100mm(Basic) E.N.T & Dental Handpiece Optional
	Laser Operation Mode	1.CW 2.Normal Pulse 3.Super Pulse 4.Super Pulse Continuous 5.Ultra Pulse 6.Smart Protocol(General Surgery/Dental Surgery)
	Pulse Duration	• Ultra Pulse :90us - 900us • Super Pulse :1000us - 3500us • NormalPulse :4ms - 20ms
	Reapet Time	OFF,2ms,5ms,10ms,30ms,50ms,70ms,100ms,250ms,500ms
General Features		
ElectricalRequirements	220v, 6A. single phase,50/60hz	
Cooling System	water cooling	
Dimensions	350x360x1200	
Weight	45Kg	
Display	10.2 inches colotcd	

CE
0068

Prismxel

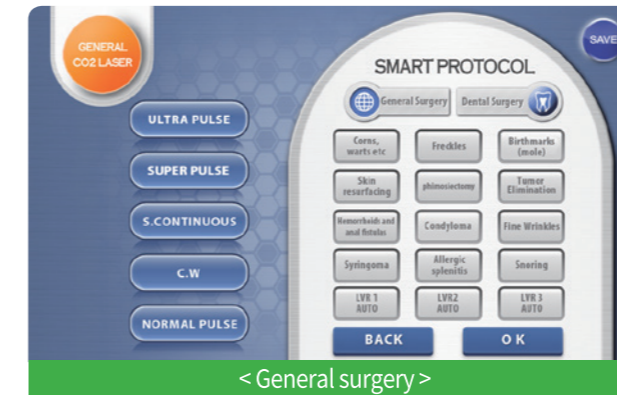
Prismxel

Surgical Mode / Dental Mode



Prismxel → Surgical Mode / Dental Mode

Smart mode for Surgical Field (General Surgery, Dental Surgery)



General Surgery Indication

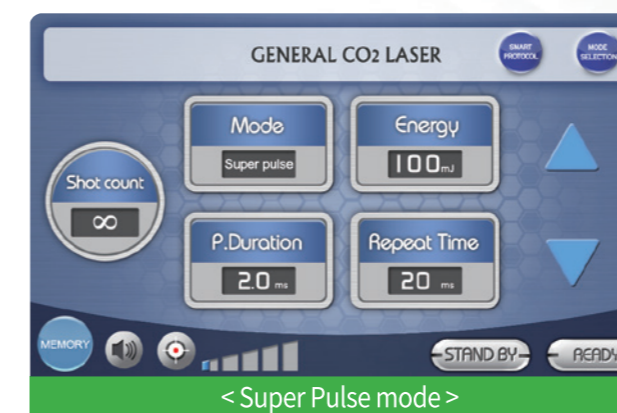
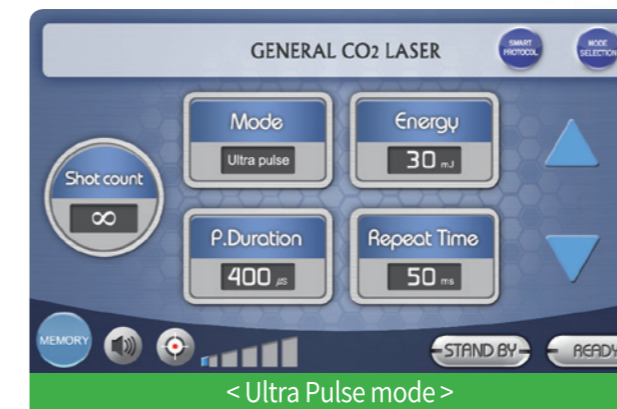
Corns, Warts etc	Freckles
Birthmarks(mole)	Skin resurfacing
Phimosiectomy	Tumor elimination
Hemorrhoids and anal fistulas	Fine wrinkle
Condyloma	Syringoma
Snoring	Allergic splenitis

Dental Surgery Indication

The second implant operation	Hyper sensitive
Hemostasis after dental extraction	Herpetic gingivitis
Crown lengthening	Frenulum excision
Gingival excision, Gingival plastic operation	Cleaning of dental cuticle cyst
Removal of pigmentation	Pulp capping -Fluorine coating
Sterilization in root canal	Sterilization in paradental cyst
Abscess treatment	

→ General Mode

General CO2 Laser Mode



General Surgery Indication

Corns, Warts etc
Birthmarks(mole)
Phimosiectomy
Hemorrhoids and anal fistulas
Condyloma
Snoring
Freckles
Skin resurfacing
Tumor elimination
Fine wrinkle
Syringoma
Allergic splenitis