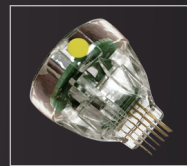
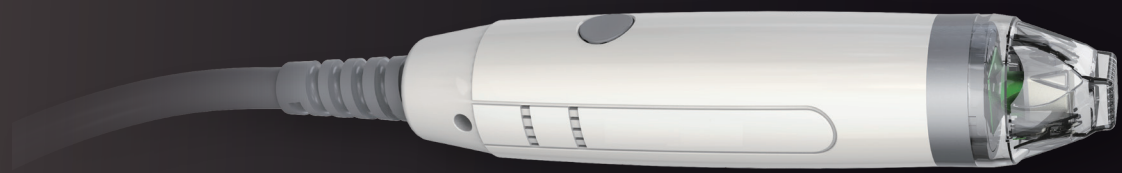
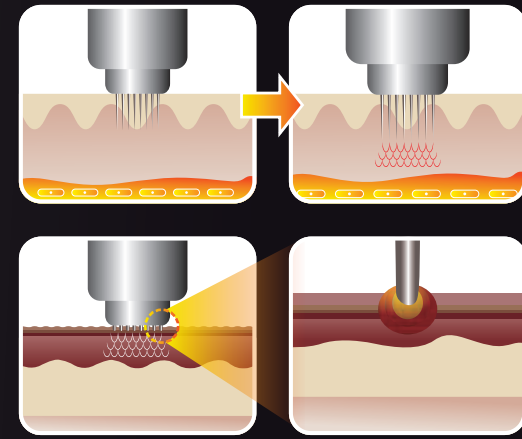


Handpiece

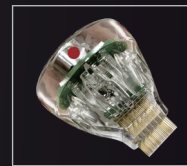
- ① Contact handpiece on epidermis
- ② Insert Microneedle upon contacting handpiece (Possible to control the length of Microneedle)
- ③ Produce stimulation by Microneedle
- ④ Give an momentary irradiation of high RF energy on treatment area



36 Tip



49 Tip



Non Insulated Tip



Non-Invasive Tip

Specifications

TYPE	Electro-surgical Device
MODE	Auto / Manual (Single / Double)
NEEDLE TYPE	Invasive Needle:36 Pin, 49 Pin Non-Invasive:36 Pin
DEPTH LEVEL	0.5mm ~ 4.0mm
OUTPUT LEVEL	Single Shot:Level 1~Level 50 / Double Shot:Level 1~Level 100
REPEAT TIME	0.5sec ~ 3.0ms, OFF
FREQUENCY	1MHz / 2MHz
ELECTRICAL	100~240VAC, 50Hz/60Hz
DIMENSION	380(W)x440(D)x1150(H)mm
WEIGHT	22kg
SMART MODE	Wrinkle, Tightening, Lifting, Nasolabial Fluid, Fat
NEEDLE TYPE	Insulation Tip (Abaltive / Non-Abaltive) Non-Insulation - Only ablative hyperhidrosis

PT-4000

RF Micro Needle

About PT-4000

Dermatology treatment has long attempted to find the surgical procedure equipment that can realize the merit of INVASIVE treatment effect simultaneously. As part of this effort, combination of advantages from the treatment principle of MICRONEEDLE STAMP and THERMAGE (known to be epitome of non-operative FACIAL-LIFTING treatment utilizing high frequency) leads to the realization of MFRF(MINIMALY FRACTIONAL RADIO FREQUENCY), new concept of treatment which has been attempted to resolve the various problems of epidermis and dermis.

PT-4000 acts very greatly to treat various lesions of DERMIS that has been believed to be a limit to the laser treatment. In addition, this equipment is TOTAL FACIAL CARE SYSTEM which can treat safely without impairment of epidermis with the aim of DERMIS COAGULATION.



Why PT-4000

Adoption of insulated needle without damage epidermis minimizes downtime.

Application of high density energy reduces irradiation time of high frequency and shortens the treatment time epochally resulting in increasing the treatment effect and minimizing pain.

Needle insert system accessible to both automatic mode and manual mode needle enables you to obtain various treatment convenience according to the lesion and treatment area.

Application of powerful motor to insert needle enables you to insert needle uniformly even for curved dermis.

Optimized treatment for the purpose of dermis coagulation show an excellent effect in the treatment of gular suture, laugh line, philtrum wrinkle, ect. which were difficult to treat with ohter devices.

Strong Points and Features

■ Sophisticated and fast treatment of convenience

Depth of penetration can be precisely adjusted in 0.1mm units from 0.5mm to 4.0mm. It can adjust the amount of energy – single/double and 1Mhz / 2Mhz.

■ Precise treatment

36 and 49 pin needles are available to be equipped. It facilitates the treatment on both wide and narrow areas.

■ Safe energy transmission system

Insulated needle tip can transmit the energy accurately on dermis area without damaging epidermis.

■ Minimize pain for treatment and no down time

Reduces the damage of epidermis as much as possible by minimizing the diameter of needle.

■ Smart mode

Stored smart mode increases the convenience for users.

Skin Test

